

Current part is item (40) on diagram. Available at [www.oshkoshequipment.com](http://www.oshkoshequipment.com)

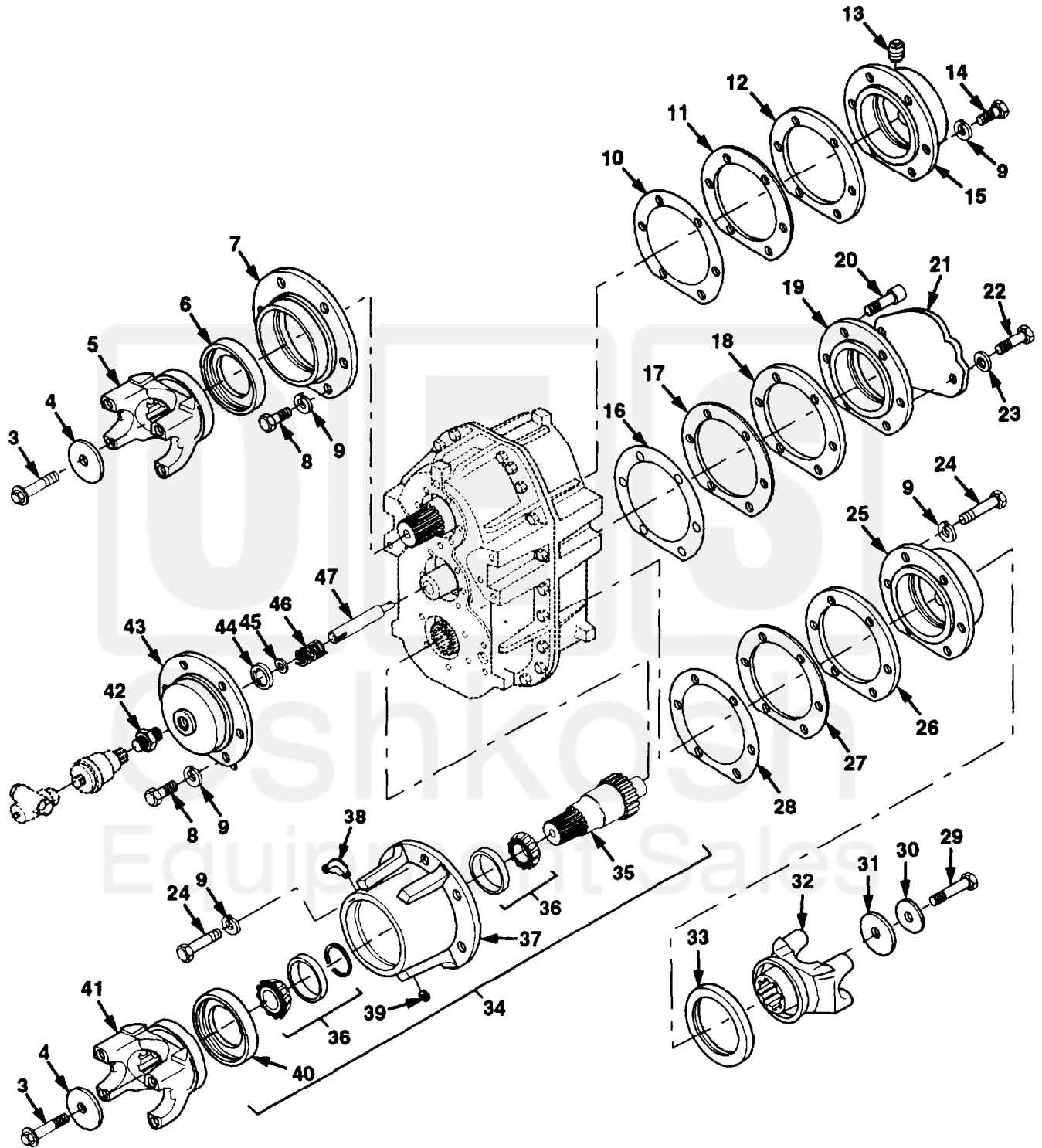


Figure 114. Transfer Case Assembly (Sheet 2 of 3)

Current part is item (40) on diagram. Available at [www.oshkoshequipment.com](http://www.oshkoshequipment.com)

## Section II. REPAIR PARTS LIST

(1) ILLUSTRATION		(2)	(3)	(4)	(5)	(6)	(7)	(8)
(a) FIG NO.	(b) ITEM NO.	SMR CODE	NATIONAL STOCK NUMBER	CAGE	PART NUMBER	DESCRIPTION	QTY	INC IN UNIT
						GROUP 0801 TRANSFER CASE ASSEMBLY		
114	34	PBHHH	3040-01-338-4576	45152	1843610U	..SHAFT ASSY, FRONT	EA	1
114	35	PBHZZ	3040-01-338-4434	45152	1843710	..SHAFT, FRONT	EA	1
114	36	PAHZZ	3110-01-338-6931	60038	39590 ASSY 902A3	..CONE AND ROLLERS	EA	1
114	37	PFHZZ	3110-01-346-9776	45152	1691980	..BEARING, CAP	EA	1
114	38	PAHZZ	4730-01-082-4662	01276	2023-4-8S	..ELBOW, PIPE TO TUBE	EA	1
114	39	PAHZZ	4730-00-221-2137	96906	MS20913-2S	..PLUG 1/4 GAL	EA	1
114	40	PAFZZ	5330-01-340-9882	01212	415023-SSR	..SEAL, OIL	EA	1
114	41	PAFZZ	2520-01-339-0535	72447	5-4-8351-1X	..YOKE, TRANSFER CASE	EA	1
114	42	PAHZZ	4730-00-202-9539	19207	7331521	..REDUCER, TUBE	EA	1
114	43	PAHZZ	3110-01-344-3955	45152	1725520	..BEARING, CAP	EA	1
114	44	PAHZZ	3120-00-596-7688	45152	39745AX	..THRUST, BEARING	EA	1
114	45	PAHZZ	3120-01-146-9782	45152	40393AX	..BEARING, WASHER	EA	1
114	46	PAHZZ	5360-01-145-4724	45152	53733AX	..SPRING, HELICAL, COMP	EA	1
114	47	PBHZZ	3040-01-144-8220	57733	105591	..SHAFT, SHOULDERED	EA	1
114	48	PBHHH	3040-01-338-7601	45152	1843600U	..SHAFT ASSY, UPPER	EA	1
114	49	PBHZZ	3110-00-100-0661	45152	462TA45	..BEARING ASSEMBLY	EA	2
114	50	PBHZZ	5365-01-143-7436	45152	1317890	..SPACER, RING	EA	1
114	51	PBHZZ	5365-01-330-2223	45152	55026BX	..SPACER	EA	2
114	52	PBHZZ	3020-01-339-0497	45152	1832480	..GEAR, HELICAL 28T	EA	1
114	53	PAHZZ	3110-00-842-5207	60380	WJ485424	..ROLLER, CAGED	EA	4
114	54	PBHZZ	5365-01-338-7416	45152	1839360	..SPACER	EA	2
114	55	PBHZZ	5365-01-332-2150	45152	55027BX	..SPACER	EA	2
114	56	PBHZZ	3020-01-144-8236	95019	70465-9	..COLLAR, CLUTCH	EA	1
114	57	PBHZZ	3040-01-338-4433	45152	1704350	..SHAFT, UPPER	EA	1
114	58	PBHZZ	3020-01-339-0498	45152	1832500	..GEAR, HELICAL 48T	EA	1
114	59	PBHZZ	5330-01-340-8368	45152	1274198	..RETAINER, PACKING	EA	1
114	60	PAHZZ	5305-00-071-2069	80204	B1821BH050C150N	..SCREW, CAP, HEX 1/2-13 X 1 1/2	EA	2
114	61	PAHZZ	3040-01-341-2340	71724	T-560-0330-001	..RING, PISTON	EA	1
114	62	PAFZZ	5305-00-225-8507	96906	MS90725-43	..SCREW, CAP, HEX 5/16-18 X 2 3/4	EA	2
114	63	PAFZZ	5310-00-407-9566	96906	MS35338-45	..WASHER, LOCK 5/16	EA	2
114	64	PFHZZ	5340-01-144-8237	45152	1321590	..COVER, ACCESS	EA	1
114	65	XAHZZ	- - -	45152	1838810	..HOUSING, XFER CASE	EA	1
114	66	PAFZZ	9905-01-144-7858	45152	11757FX	..PLATE, ID	EA	1